

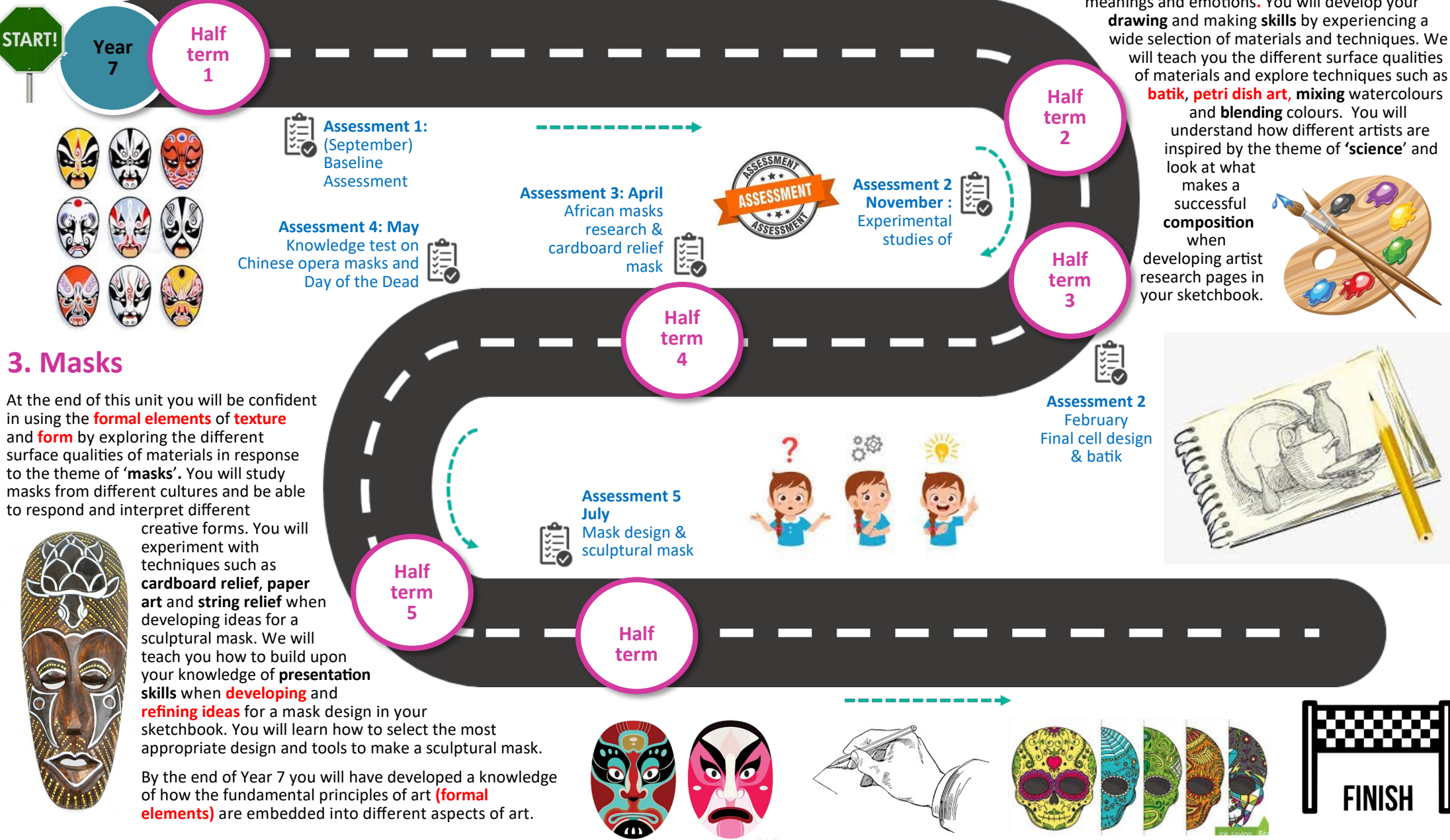
1. Baseline assessment

At the end of this unit you will be confident in using the **formal elements** of **line** and **tone** to create observational studies such as **drawing** and **tonal** work. We will teach you how to use subject appropriate critical language to effectively **describe** and **explain** the work of both contemporary and traditional art. You will understand what the differences are between an **abstract** and **realistic** piece of artwork and adopt an abstract style of working when creating a piece of work. The skills you learn in this unit will be developed throughout your ks3 Art lessons in Year 7.



2. Colour and pattern

At the end of this unit you will be confident in using the **formal elements** of **colour** and **pattern** by creating a series of experimental studies of cells. This scheme will explore **colour theory** and look at how to **mix** and **apply** colour so you can convey concepts such as **warm** and **cool** to express meanings and emotions. You will develop your **drawing** and making **skills** by experiencing a wide selection of materials and techniques. We will teach you the different surface qualities of materials and explore techniques such as **batik**, **petri dish art**, **mixing** watercolours and **blending** colours. You will understand how different artists are inspired by the theme of **'science'** and look at what makes a successful **composition** when developing artist research pages in your sketchbook.



3. Masks

At the end of this unit you will be confident in using the **formal elements** of **texture** and **form** by exploring the different surface qualities of materials in response to the theme of **'masks'**. You will study masks from different cultures and be able to respond and interpret different

creative forms. You will experiment with techniques such as **cardboard relief**, **paper art** and **string relief** when developing ideas for a sculptural mask. We will teach you how to build upon your knowledge of **presentation skills** when **developing** and **refining ideas** for a mask design in your sketchbook. You will learn how to select the most appropriate design and tools to make a sculptural mask.

By the end of Year 7 you will have developed a knowledge of how the fundamental principles of art (**formal elements**) are embedded into different aspects of art.

